



*Embracing the Path Home*



FIRST FLOOR PLAN

<span style="display:inline-block; width:15px; height:15px; background-color:tan; border:1px solid black;"></span>	SUITE
<span style="display:inline-block; width:15px; height:15px; background-color:green; border:1px solid black;"></span>	BATHROOM
<span style="display:inline-block; width:15px; height:15px; background-color:grey; border:1px solid black;"></span>	STORAGE/ CLOSET
<span style="display:inline-block; width:15px; height:15px; background-color:teal; border:1px solid black;"></span>	COMMUNITY SPACE
<span style="display:inline-block; width:15px; height:15px; background-color:purple; border:1px solid black;"></span>	STAIRS
<span style="display:inline-block; width:15px; height:15px; background-color:darkgrey; border:1px solid black;"></span>	OFFICE
<span style="display:inline-block; width:15px; height:15px; background-color:red; border:1px solid black;"></span>	VESTIBULE



For Emergency Human Needs

27 Degrange Street | Frederick, MD 21701 | 301.631.2670 | [www.rcehn.org](http://www.rcehn.org)

To learn more about how you can support the Beyond Shelter Campaign,  
call the Director of Philanthropy at 301-631-2670 x117.



*Embracing the Path Home*



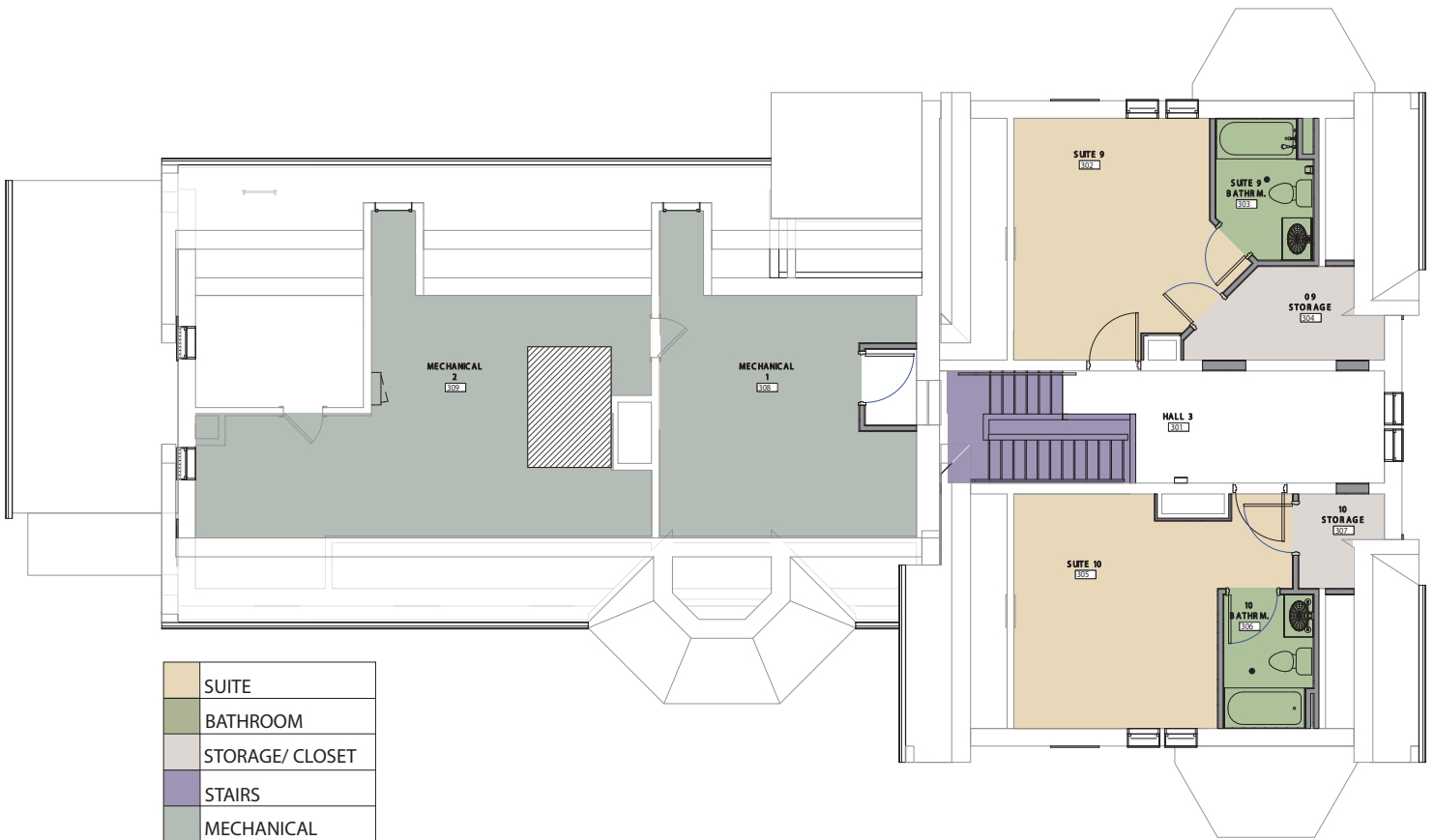
27 Degrange Street | Frederick, MD 21701 | 301.631.2670 | [www.rcehn.org](http://www.rcehn.org)

To learn more about how you can support the Beyond Shelter Campaign,  
call the Director of Philanthropy at 301-631-2670 x117.



# BEYOND SHELTER

*Embracing the Path Home*



THIRD FLOOR PLAN



27 Degrange Street | Frederick, MD 21701 | 301.631.2670 | [www.rcehn.org](http://www.rcehn.org)

To learn more about how you can support the Beyond Shelter Campaign,  
call the Director of Philanthropy at 301-631-2670 x117.



*Embracing the Path Home*



27 Degrange Street | Frederick, MD 21701 | 301.631.2670 | [www.rcehn.org](http://www.rcehn.org)

To learn more about how you can support the Beyond Shelter Campaign,  
call the Director of Philanthropy at 301-631-2670 x117.